



HDPE Grass Pavers

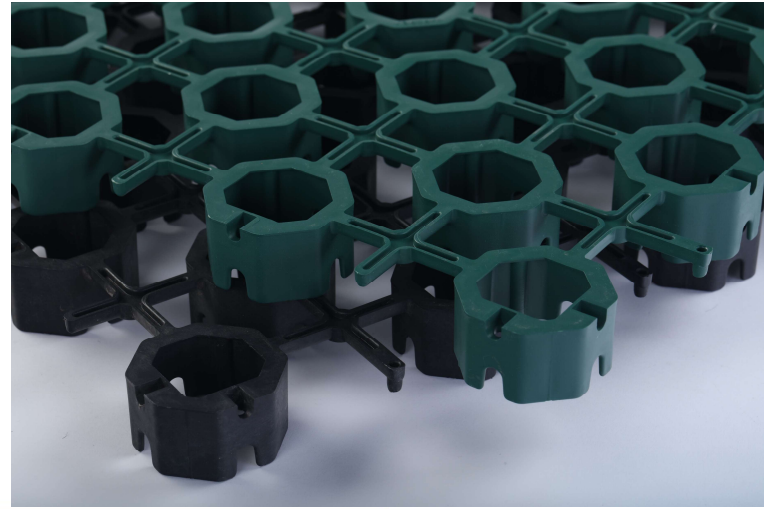
TerraShield HDPE Grass Paver is a lightweight, high strength interlocking plastic grass paver designed for the creation of grassed areas subject to pedestrian and occasional vehicular traffic. HDPE Grass Pavers are used in the construction of emergency access, overflow parking, home driveways, golf buggy paths and slope stabilization. IMPTREX Grass Paver has a porous structure allowing rainwater to infiltrate into the ground. The high loadbearing structure protects grass roots against compaction and effectively supports loads imposed by large fire trucks. Cells contain notches, have large open base areas and high void spaces that promote and ensure healthy root development.

Applications

-  Gravel Containment
-  Stabilize turf, grass & paver in: Vehicle parking, golf cart paths, street shoulder parking, race track infield & pit areas, drainage channels

Features

- More than 90% unrestricted root base area
- Height of the cells allow vigorous root development
- Ability to peg the sub base on slopes and curves
- Nesting design that halves storage and transportation costs
- Flexible connecting grids ensure modules conformed to uneven surfaces
- Stabilized turf surfaces protected against erosion
- Enhanced site appearance through "Green" vegetation
- Minimized storm water run-off



Specification

HDPE GRASS PAVER SPECIFICATIONS

PROPERTY	VALUE
Material	Recycled Polypropylene
Colour	Black / Green
Weight	Approx. 3.2 kg/m ²
Size	500 mm (L) x 500 mm (W) x 35 mm (H)
Panels per m ²	4
Compressive Strength	Unfilled > 1,250 kN/m ² (125 t/m ²)
Biological / Chemical Resistance	Unaffected by molds and algae and good resistance to rot, oils, acids, alkalis, bitumen and naturally occurring soil chemicals

