





Glass Fiber Grid

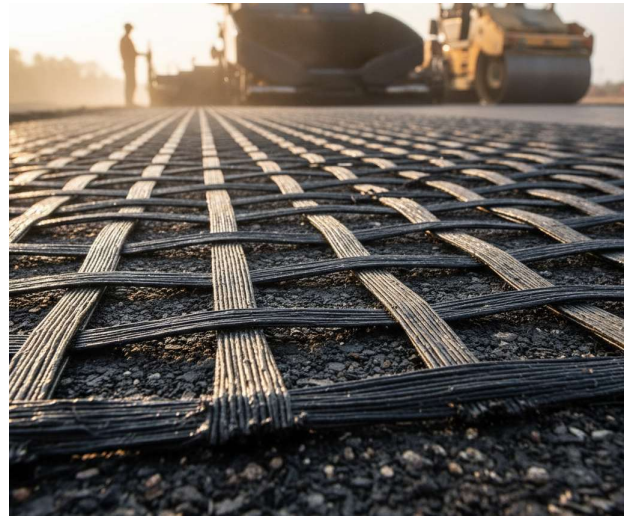
TerraShield Glass Fiber Grid (Fiberglass Geogrid) is a reinforcement material made from glass fibers that are coated with a protective polymer, such as bitumen or PVC, to improve durability and resistance to chemical and environmental damage.

Applications

-  Road Construction & Re-Habilitation
-  Railway & Port Pavements
-  Airport Runways & Parking Lots
-  Slope Stabilization

Features

- A. High tensile strength & durability
- B. Low Elongation
- C. Corrosion Resistance
- D. Thermal Stability
- E. Long-term durability



Specification

Properties	Test Method	Unit	TSI-O2
Tensile Strength (MD x CMD)	ASTM D 6637	kN/m (≥)	100 x 100
Tensile Elongation		%	3 (±1)
Young's Modulus E	---	MPa	73000
Melting Point of Coating	ASTM D 276	°C (>)	250
Mass per Unit Area	ASTM D 5261	g/m ² (>)	400
Aperture Size	---	MM	12.5 x 12.5
Roll Width	---	Meter	1.50
Roll Length	---	Meter	100
Material	Glass Fiber Coated with Asphalt Compatible Polymer.		

MD – Machine Direction | **CMD** – Cross Machine Direction | With Pressure Sensitive Adhesive

*The values given are indicative and correspond to average results obtained in our laboratories and testing institutes.

